

## PC LED TUBE - INTERNAL DRIVER



### \* Product features:

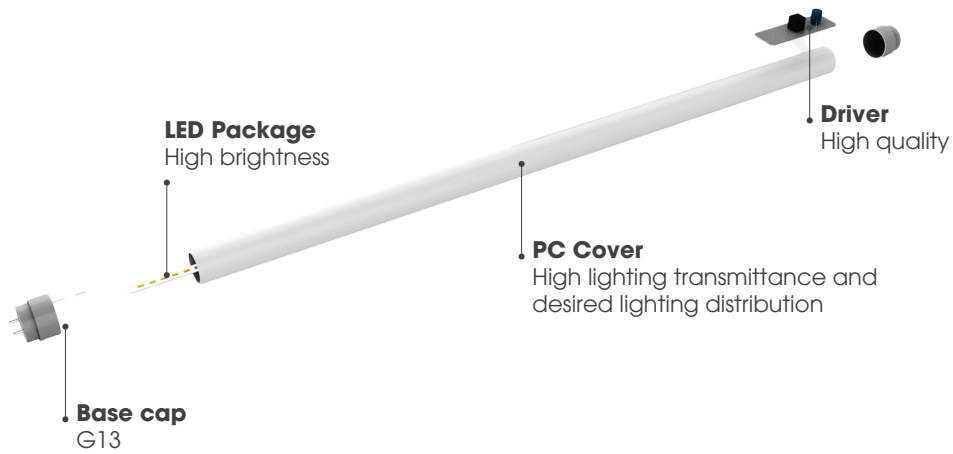
- High-quality LEDs provided by Samsung/ Seoul Semiconductor/ Nichia/ Lumiled with excellent performance
- High CRI of 80/90/Sunlike for high color accuracy
- High efficacy up to 150 lm/W
- PC cover with high lighting transmittance and desired lighting distribution
- Double end powered
- CE, KC, UL certified
- Long lifespan: 30,000 hours, saving the maintenance cost

### \* Applications:

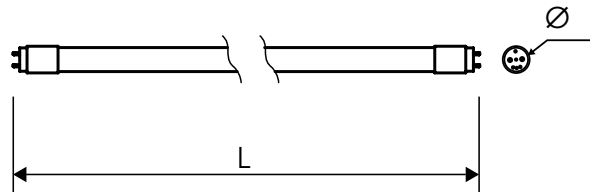
- Home, offices, showrooms, restaurants, supermarkets, etc.



## PRODUCT DETAILS



## PRODUCT SPECIFICATIONS



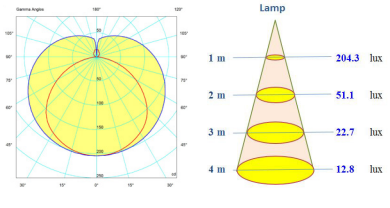
Model	Dimension ØxL (mm)	Power (W)	Voltage (V)	Power factor	Luminous flux (lm)	Luminous Efficacy (lm/W)	CCT (K)	CRI (Ra)	Beam angle (°)	Lifespan (hrs)
T8 N01 600/9W	26x603	9	120/ 220÷240/ 100÷277V	0.5/0.9	990/ 1080 1170/ 1350	110/ 120 130/ 150	3000/4000/5000/6500/8000	80/90/Sunlike	180	30,000
T8 N01 600/10W	26x603	10	120/ 220÷240/ 100÷277V	0.5/0.9	1100/ 1200 1300/ 1500	110/ 120 130/ 150	3000/4000/5000/6500/8000	80/90/Sunlike	180	30,000
T8 N01 1200/18W	26x1213	18	120/ 220÷240/ 100÷277V	0.5/0.9	1980/ 2160 2340/ 2700	110/ 120 130/ 150	3000/4000/5000/6500/8000	80/90/Sunlike	180	30,000
T8 N01 1200/20W	26x1213	20	120/ 220÷240/ 100÷277V	0.5/0.9	2200/ 2400 2600/ 3000	110/ 120 130/ 150	3000/4000/5000/6500/8000	80/90/Sunlike	180	30,000

**Capacity: 2.7 million pieces per year**

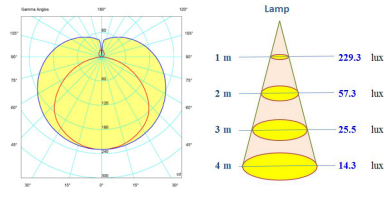
**Customizable:** Power (9/10/18/20W), Voltage (120/220÷240/100÷277), PF (0.5/0.9), lm/W (up to 150), CCT (3000/4000/5000/6500/8000K), CRI (80/90/Sunlike), lifespan, etc.

## LUMINOUS INTENSITY DISTRIBUTION

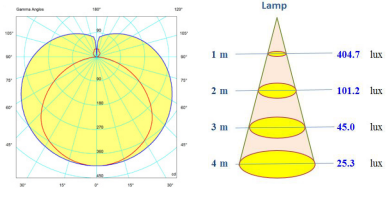
T8 N01 600/9W



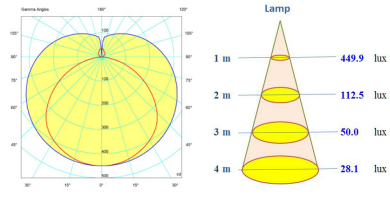
T8 N01 600/10W



T8 N01 1200/18W



T8 N01 1200/20W



## PACKING AND TRANSPORTATION



Type of lamps	Quantity in master box (pcs)	Estimated quantity / 20'DC (pcs)	Estimated quantity / 40'HC (pcs)
T8 600 9W/10W	20	49 680	114 100
T8 1200 18W/20W	20	25 040	57 500

Customizable according to customer's request



Exported market: South Korea, EU, etc



**RANG DONG LIGHT SOURCE AND VACUUM FLASK JOINT STOCK COMPANY**  
 Add: 87- 89 Ha Dinh Street, Thanh Xuan, Hanoi, Vietnam  
 Tel: (84-24) 3 858 4310 / 3 858 4165  
 Fax: (84-24) 3 858 5038  
 Email: export@rangdong.com.vn



Specifications are subject to change without prior notice